



Frequently Asked Questions (FAQs)

On this Page

- [What are head lice? \(/parasites/lice/head/gen_info/faqs.html#what\)](/parasites/lice/head/gen_info/faqs.html#what)
- [Who is at risk for getting head lice? \(/parasites/lice/head/gen_info/faqs.html#risk\)](/parasites/lice/head/gen_info/faqs.html#risk)
- [What do head lice look like? \(/parasites/lice/head/gen_info/faqs.html#appear\)](/parasites/lice/head/gen_info/faqs.html#appear)
- [Where are head lice commonly found? \(/parasites/lice/head/gen_info/faqs.html#found\)](/parasites/lice/head/gen_info/faqs.html#found)
- [What are the signs and symptoms of head lice infestation? \(/parasites/lice/head/gen_info/faqs.html#symptoms\)](/parasites/lice/head/gen_info/faqs.html#symptoms)
- [How did my child get head lice? \(/parasites/lice/head/gen_info/faqs.html#transmit\)](/parasites/lice/head/gen_info/faqs.html#transmit)
- [How is a head lice infestation diagnosed? \(/parasites/lice/head/gen_info/faqs.html#diagnosed\)](/parasites/lice/head/gen_info/faqs.html#diagnosed)
- [How is a head lice infestation treated? \(/parasites/lice/head/gen_info/faqs.html#treat\)](/parasites/lice/head/gen_info/faqs.html#treat)
- [Is infestation with head lice reportable to health departments? \(/parasites/lice/head/gen_info/faqs.html#report\)](/parasites/lice/head/gen_info/faqs.html#report)
- [I don't like my school's head lice policy. can CDC do something? \(/parasites/lice/head/gen_info/faqs.html#policy\)](/parasites/lice/head/gen_info/faqs.html#policy)
- [Do head lice spread disease? \(/parasites/lice/head/gen_info/faqs.html#spread\)](/parasites/lice/head/gen_info/faqs.html#spread)
- [Can head lice be spread by sharing sports helmets and headphones? \(/parasites/lice/head/gen_info/faqs.html#helmets\)](/parasites/lice/head/gen_info/faqs.html#helmets)
- [Can wigs or hair pieces spread lice? \(/parasites/lice/head/gen_info/faqs.html#wigs\)](/parasites/lice/head/gen_info/faqs.html#wigs)
- [Can swimming spread lice? \(/parasites/lice/head/gen_info/faqs.html#swim\)](/parasites/lice/head/gen_info/faqs.html#swim)

What are head lice?

The head louse, or *Pediculus humanus capitis*, is a parasitic insect that can be found on the head, eyebrows, and eyelashes of people. Head lice feed on human blood several times a day and live close to the human scalp. Head lice are not known to spread disease.

Who is at risk for getting head lice?

Head lice are found worldwide. In the United States, infestation with head lice is most common among pre-school children attending child care, elementary schoolchildren, and the household members of infested children. Although reliable data on how many people in the United States get head lice each year are not available, an estimated 6 million to 12 million infestations occur each year in the United States among children 3 to 11 years of age. In the United States, infestation with head lice is much less common among African-Americans than among persons of other races, possibly because the claws of the of the head louse found most frequently in the United States are better adapted for grasping the shape and width of the hair shaft of other races.

Head lice move by crawling; they cannot hop or fly. Head lice are spread by direct contact with the hair of an infested person. Anyone who comes in head-to-head contact with someone who already has head lice is at greatest risk. Spread by contact with

clothing (such as hats, scarves, coats) or other personal items (such as combs, brushes, or towels) used by an infested person is uncommon. Personal hygiene or cleanliness in the home or school has nothing to do with getting head lice.

What do head lice look like?

Head lice have three forms: the egg (also called a nit), the nymph, and the adult.

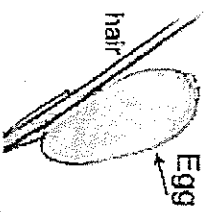
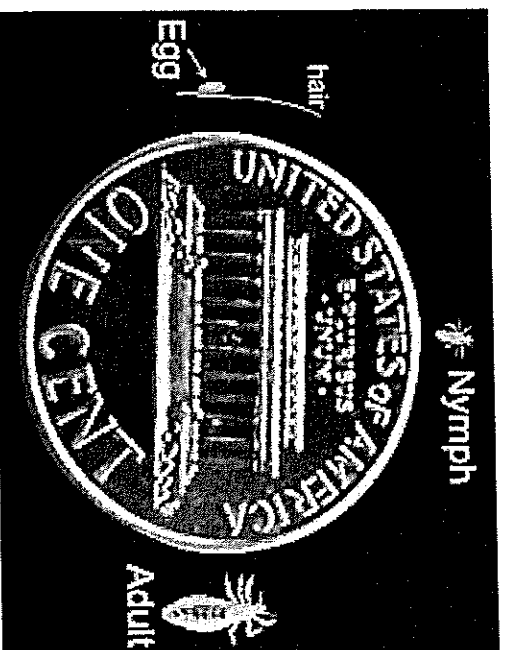


Illustration of egg on a hair shaft. (CDC Photo)

Egg/Nit: Nits are lice eggs laid by the adult female head louse at the base of the hair shaft nearest the scalp. Nits are firmly attached to the hair shaft and are oval-shaped and very small (about the size of a knot in thread) and hard to see. Nits often appear yellow or white although live nits sometimes appear to be the same color as the hair of the infested person. Nits are often confused with dandruff, scabs, or hair spray droplets. Head lice nits usually take about 8–9 days to hatch. Eggs that are likely to hatch are usually located no more than ¼ inch from the base of the hair shaft. Nits located further than ¼ inch from the base of hair shaft may very well be already hatched, non-viable nits, or empty nits or casings. This is difficult to distinguish with the naked eye.



Nymph form. (CDC Photo)

Nymph: A nymph is an immature louse that hatches from the nit. A nymph looks like an adult head louse, but is smaller. To live, a nymph must feed on blood. Nymphs mature into adults about 9–12 days after hatching from the nit.



Adult louse. (CDC Photo)

Adult: The fully grown and developed adult louse is about the size of a sesame seed, has six legs, and is tan to grayish-white in color. Adult head lice may look darker in persons with dark hair than in persons with light hair. To survive, adult head lice must feed on blood. An adult head louse can live about 30 days on a person's head but will die within one or two days if it falls off a person. Adult female head lice are usually larger than males and can lay about six eggs each day.



Adult louse claws. (CDC Photo)

Where are head lice most commonly found?

Head lice and head lice nits are found almost exclusively on the scalp, particularly around and behind the ears and near the neckline at the back of the head. Head lice or head lice nits sometimes are found on the eyelashes or eyebrows but this is uncommon. Head lice hold tightly to hair with hook-like claws at the end of each of their six legs. Head lice nits are cemented firmly to the hair shaft and can be difficult to remove even after the nymphs hatch and empty casings remain.

What are the signs and symptoms of head lice infestation?

- Ticking feeling of something moving in the hair.
- Itching, caused by an allergic reaction to the bites of the head louse.
- Irritability and difficulty sleeping; head lice are most active in the dark.
- Sores on the head caused by scratching. These sores can sometimes become infected with bacteria found on the person's skin.

How did my child get head lice?

Head-to-head contact with an already infested person is the most common way to get head lice. Head-to-head contact is common during play at school, at home, and elsewhere (sports activities, playground, slumber parties, camp).

Although uncommon, head lice can be spread by sharing clothing or belongings. This happens when lice crawl, or nits attached to shed hair hatch, and get on the shared clothing or belongings. Examples include:

- sharing clothing (hats, scarves, coats, sports uniforms) or articles (hair ribbons, barrettes, combs, brushes, towels, stuffed animals) recently worn or used by an infested person;
- or lying on a bed, couch, pillow, or carpet that has recently been in contact with an infested person.

Dogs, cats, and other pets do not play a role in the spread of head lice.

How is head lice infestation diagnosed?

The diagnosis of a head lice infestation is best made by finding a live nymph or adult louse on the scalp or hair of a person. Because nymphs and adult lice are very small, move quickly, and avoid light, they can be difficult to find. Use of a magnifying lens and a fine-toothed comb may be helpful to find live lice. If crawling lice are not seen, finding nits firmly attached within a 1/4 inch of base of the hair shafts strongly suggests, but does not confirm, that a person is infested and should be treated. Nits that are attached more than 1/4 inch from the base of the hair shaft are almost always dead or already hatched. Nits are often confused with other things found in the hair such as dandruff, hair spray droplets, and dirt particles. If no live nymphs or adult lice are seen, and the only nits found are more than 1/4-inch from the scalp, the infestation is probably old and no longer active and does not need to be treated.

If you are not sure if a person has head lice, the diagnosis should be made by their health care provider, local health department, or other person trained to identify live head lice.

How is head lice infestation treated?

More on: [Treatment \(/parasites/lice/head/treatment.html\)](/parasites/lice/head/treatment.html)

Is infestation with head lice reportable to health departments?

Most health departments do not require reporting of head lice infestation. However, it may be beneficial for the sake of others to share information with school nurses, parents of classmates, and others about contact with head lice.

I don't like my school's "no-nit" policy; can CDC do something?

No. CDC is not a regulatory agency. School head lice policies often are determined by local school boards. Local health departments may have guidelines that address school head lice policies; check with your local and state health departments to see if they have such recommendations.

More on: [Head Lice Information for Schools \(/parasites/lice/head/schools.html\)](/parasites/lice/head/schools.html)

Do head lice spread disease?

Head lice should not be considered as a medical or public health hazard. Head lice are not known to spread disease. Head lice can be an annoyance because their presence may cause itching and loss of sleep. Sometimes the itching can lead to excessive scratching that can sometimes increase the chance of a secondary skin infection.

Can head lice be spread by sharing sports helmets or headphones?

Head lice are spread most commonly by direct contact with the hair of an infested person. Spread by contact with inanimate objects and personal belongings may occur but is very uncommon. Head lice feet are specially adapted for holding onto human hair. Head lice would have difficulty attaching firmly to smooth or slippery surfaces like plastic, metal, polished synthetic leathers, and other similar materials.

Can wigs or hair pieces spread lice?

Head lice and their eggs (nits) soon perish if separated from their human host. Adult head lice can live only a day or so off the human head without blood for feeding. Nymphs (young head lice) can live only for several hours without feeding on a human. Nits (head lice eggs) generally die within a week away from their human host and cannot hatch at a temperature lower than that close to the human scalp. For these reasons, the risk of transmission of head lice from a wig or other hairpiece is extremely small, particularly if the wig or hairpiece has not been worn within the preceding 48 hours by someone who is actively infested with live head lice.

Can swimming spread lice?

Data show that head lice can survive under water for several hours but are unlikely to be spread by the water in a swimming pool. Head lice have been seen to hold tightly to human hair and not let go when submerged under water. Chlorine levels found in pool water do not kill head lice.

Head lice may be spread by sharing towels or other items that have been in contact with an infested person's hair, although such

spread is uncommon. Children should be taught not to share towels, hair brushes, and similar items either at poolside or in the changing room.

Swimming or washing the hair within 1–2 days after treatment with some head lice medicines might make some treatments less effective. Seek the advice of your health care provider or health department if you have questions.

This information is not meant to be used for self-diagnosis or as a substitute for consultation with a health care provider. If you have any questions about the parasites described above or think that you may have a parasitic infection, consult a health care provider.

Page last reviewed: September 2, 2015

Page last updated: September 2, 2015

Content source: [Global Health - Division of Parasitic Diseases and Malaria](#)

Notice: Linking to a non-federal site does not constitute an endorsement by HHS, CDC or any of its employees of the sponsors or the information and products presented on the site.

Centers for Disease Control and Prevention 1600 Clifton Rd. Atlanta, GA 30329-4027, USA

800-CDC-INFO (800-232-4636) TTY: (888) 232-6348 - [Contact CDC-INFO](#)





Treatment

General Guidelines

Treatment for head lice is recommended for persons diagnosed with an active infestation. All household members and other close contacts should be checked; those persons with evidence of an active infestation should be treated. Some experts believe prophylactic treatment is prudent for persons who share the same bed with actively-infested individuals. All infested persons (household members and close contacts) and their bedmates should be treated at the same time.

Some pediculicides (medicines that kill lice) have an ovicidal effect (kill eggs). For pediculicides that are only weakly ovicidal or not ovicidal, routine retreatment is recommended. For those that are more strongly ovicidal, retreatment is recommended only if live (crawling) lice are still present several days after treatment (see recommendation for each medication). To be most effective, retreatment should occur after all eggs have hatched but before new eggs are produced.

When treating head lice, supplemental measures can be combined with recommended medicine (pharmacologic treatment); however, such additional (non-pharmacologic) measures generally are not required to eliminate a head lice infestation. For example, hats, scarves, pillow cases, bedding, clothing, and towels worn or used by the infested person in the 2-day period just before treatment is started can be machine washed and dried using the hot water and hot air cycles because lice and eggs are killed by exposure for 5 minutes to temperatures greater than 53.5°C (128.3°F). Items that cannot be laundered may be dry-cleaned or sealed in a plastic bag for two weeks. Items such as hats, grooming aids, and towels that come in contact with the hair of an infested person should not be shared. Vacuuming furniture and floors can remove an infested person's hairs that might have viable nits attached.

Treatment of the infested person(s): Requires using an Over-the-counter (OTC) or prescription medication. Follow these treatment steps:

1. Before applying treatment, it may be helpful to remove clothing that can become wet or stained during treatment.
2. Apply lice medicine, also called pediculicide, according to the instructions contained in the box or printed on the label. If the infested person has very long hair (longer than shoulder length), it may be necessary to use a second bottle. Pay special attention to instructions on the label or in the box regarding how long the medication should be left on the hair and how it should be washed out.

WARNING:

Do not use a combination shampoo/conditioner, or conditioner before using lice medicine. Do not re-wash the hair for 1–2 days after the lice medicine is removed. These measures may reduce the effectiveness of the lice medications.

3. Have the infested person put on clean clothing after treatment.
4. If a few live lice are still found 8–12 hours after treatment, but are moving more slowly than before, do not retreat. The medicine may take longer to kill all the lice. Comb dead and any remaining live lice out of the hair using a fine-toothed nit comb.
5. If, after 8–12 hours of treatment, no dead lice are found and lice seem as active as before, the medicine may not be working. Do not retreat until speaking with your health care provider; a different pediculicide may be necessary. If your health care provider recommends a different pediculicide, carefully follow the treatment instructions contained in the box or printed on the label.
6. Nit (head lice egg) combs, often found in lice medicine packages, should be used to comb nits and lice from the hair shaft. Many flea combs made for cats and dogs are also effective.
7. After each treatment, checking the hair and combing with a nit comb to remove nits and lice every 2–3 days may decrease the chance of self-reinfestation. Continue to check for 2–3 weeks to be sure all lice and nits are gone. Nit removal is not needed when treating with spinosad topical suspension.
8. Retreatment is meant to kill any surviving hatched lice before they produce new eggs. For some drugs, retreatment is recommended routinely about a week after the first treatment (7–9 days, depending on the drug) and for others only if crawling lice are seen during this period. Retreatment with lindane shampoo is not recommended.

Supplemental Measures: Head lice do not survive long if they fall off a person and cannot feed. You don't need to spend a lot of time or money on housecleaning activities. Follow these steps to help avoid re-infestation by lice that have recently fallen off the hair or crawled onto clothing or furniture.

1. Machine wash and dry clothing, bed linens, and other items that the infested person wore or used during the 2 days before treatment using the hot water (130°F) laundry cycle and the high heat drying cycle. Clothing and items that are not washable can be dry-cleaned

OR

sealed in a plastic bag and stored for 2 weeks.

2. Soak combs and brushes in hot water (at least 130°F) for 5–10 minutes.
3. Vacuum the floor and furniture, particularly where the infested person sat or lay. However, the risk of getting infested by a louse that has fallen onto a rug or carpet or furniture is very low. Head lice survive less than 1–2 days if they fall off a person and cannot feed; nits cannot hatch and usually die within a week if they are not kept at the same temperature as that found close to the human scalp. Spending much time and money on housecleaning activities is not necessary to avoid reinfestation by lice or nits that may have fallen off the head or crawled onto furniture or clothing.
4. Do not use fumigant sprays; they can be toxic if inhaled or absorbed through the skin.

Prevent Reinfestation:

More on: Prevention & Control (/parasites/lice/head/prevent.html)

Over-the-counter Medications

Many head lice medications are available "over-the-counter" without a prescription at a local drug store or pharmacy. Each over-the-counter product approved by the FDA for the treatment of head lice contains one of the following active ingredients. If crawling lice are still seen after a full course of treatment contact your health care provider.

1. **Pyrethrins** combined with piperonyl butoxide;
Brand name products: A-200*, Pronto*, R&C*, Rid*, Triple X*, Liceide*

Pyrethrins are naturally occurring pyrethroid extracts from the chrysanthemum flower. Pyrethrins are safe and effective when used as directed. Pyrethrins can only kill live lice, not unhatched eggs (nits). A second treatment is recommended 9 to 10 days after the first treatment to kill any newly hatched lice before they can produce new eggs. Pyrethrins generally should not be used by persons who are allergic to chrysanthemums or ragweed. Pyrethrin is approved for use on children 2 years of age and older.

2. **Permethrin lotion, 1%**;
Brand name product: Nix*

Permethrin is a synthetic pyrethroid similar to naturally occurring pyrethrins. Permethrin lotion 1% is approved by the FDA for the treatment of head lice. Permethrin is safe and effective when used as directed. Permethrin kills live lice but not unhatched eggs. Permethrin may continue to kill newly hatched lice for several days after treatment. A second treatment often is necessary on day 9 to kill any newly hatched lice before they can produce new eggs. Permethrin is approved for use on children 2 months of age and older.

Prescription Medications

The following medications, in alphabetical order, approved by the U.S. Food and Drug Administration (FDA) for the treatment of head lice are available only by prescription. If crawling lice are still seen after a full course of treatment, contact your health care provider.

- **Benzyd alcohol lotion, 5%**;
Brand name product: Ulesfia lotion*

Benzyd alcohol is an aromatic alcohol. Benzyd alcohol lotion, 5% has been approved by the FDA for the treatment of head lice and is considered safe and effective when used as directed. It kills lice but it is not ovicidal(i.e., does not kill lice eggs). A second treatment is needed 9 days after the first treatment to kill any newly hatched lice before they can produce new eggs. Benzyd alcohol lotion is intended for use on persons who are 6 months of age and older and its safety in persons aged more 60 years has not been established. It can be irritating to the skin.

- **Ivermectin lotion, 0.5%**;
Brand name product: Sklice*

Ivermectin lotion, 0.5% was approved by the FDA in 2012 for treatment of head lice in persons 6 months of age and older. It is not ovicidal, but appears to prevent nymphs (newly hatched lice) from surviving. It is effective in most patients when

given as a single application on dry hair without nit combing. It should not be used for retreatment without talking to a healthcare provider.

Given as a tablet in mass drug administrations, oral ivermectin has been used extensively and safely for over two decades in many countries to treat filarial worm infections. Although not FDA-approved for the treatment of lice, ivermectin tablets given in a single oral dose of 200 micrograms/kg repeated in 10 days or 400 micrograms/kg repeated in 7 days has been shown effective against head lice. It should not be used in children weighing less than 15 kg or in pregnant women.

- **Malathion lotion, 0.5%;**
Brand name product: Ovide*

Malathion is an organophosphate. The formulation of malathion approved in the United States for the treatment of head lice is a lotion that is safe and effective when used as directed. Malathion is pediculicidal (kills live lice) and ovicidal (kills lice eggs). A single application is adequate for most patients. However, a second treatment is recommended if live lice still are present 7–9 days after treatment. Malathion is intended for use on persons 6 years of age and older. Malathion can be irritating to the skin. Malathion lotion is flammable therefore hair should be allowed to dry naturally; do not use electrical heat sources, including hair dryers, curlers, and curling or flat irons, or smoke when applying malathion lotion and while the hair is wet.

More on: Malathion (/parasites/lice/head/gen_info/faqs_malathion.html)

- **Spinosad 0.9% topical suspension;**
Brand name product: Natroba*

Spinosad is derived from soil bacteria. Spinosad topical suspension, 0.9%, was approved by the FDA in 2011. Since it kills live lice as well as unhatched eggs, retreatment is usually not needed. Nit combing is not required. Spinosad topical suspension is approved for the treatment of children 6 months of age and older. It is safe and effective when used as directed. Repeat treatment should be given only if live (crawling) lice are seen 7 days after the first treatment.

For second-line treatment only:

- **Lindane shampoo 1%;**
Brand name products: None available

Lindane is an organochloride. The American Academy of Pediatrics (AAP) no longer recommends it as a pediculocide. Although lindane shampoo 1% is approved by the FDA for the treatment of head lice, it is not recommended as a first-line treatment. Overuse, misuse, or accidentally swallowing lindane can be toxic to the brain and other parts of the nervous system; its use should be restricted to patients for whom prior treatments have failed or who cannot tolerate other medications that pose less risk. Lindane should not be used to treat premature infants, persons with HIV, a seizure disorder, women who are pregnant or breast-feeding, persons who have very irritated skin or sores where the lindane will be applied, infants, children, the elderly, and persons who weigh less than 110 pounds. Retreatment should be avoided.

When treating head lice

1. Do not use extra amounts of any lice medication unless instructed to do so by your physician or pharmacist. The drugs used to treat lice are insecticides and can be dangerous if they are misused or overused.
2. All the medications listed above should be kept out of the eyes. If they get onto the eyes, they should be immediately flushed away.
3. Do not treat an infested person more than 2–3 times with the same medication if it does not seem to be working. This may be caused by using the medicine incorrectly or by resistance to the medicine. Always seek the advice of your health care provider if this should happen. He/she may recommend an alternative medication.
4. Do not use different head lice drugs at the same time unless instructed to do so by your physician or pharmacist.

**Use of trade names is for identification purposes only and does not imply endorsement by the Public Health Service or by the U.S. Department of Health and Human Services.*

Page last reviewed: December 28, 2015

Page last updated: December 28, 2015

Content source: [Global Health - Division of Parasitic Diseases and Malaria](#)

Notice: Linking to a non-federal site does not constitute an endorsement by HHS, CDC or any of its employees of the sponsors or the information and products presented on the site.

Centers for Disease Control and Prevention 1600 Clifton Rd. Atlanta, GA 30329-4027, USA
800-CDC-INFO (800-232-4636) TTY: (888) 232-6348 - [Contact CDC-INFO](#)



