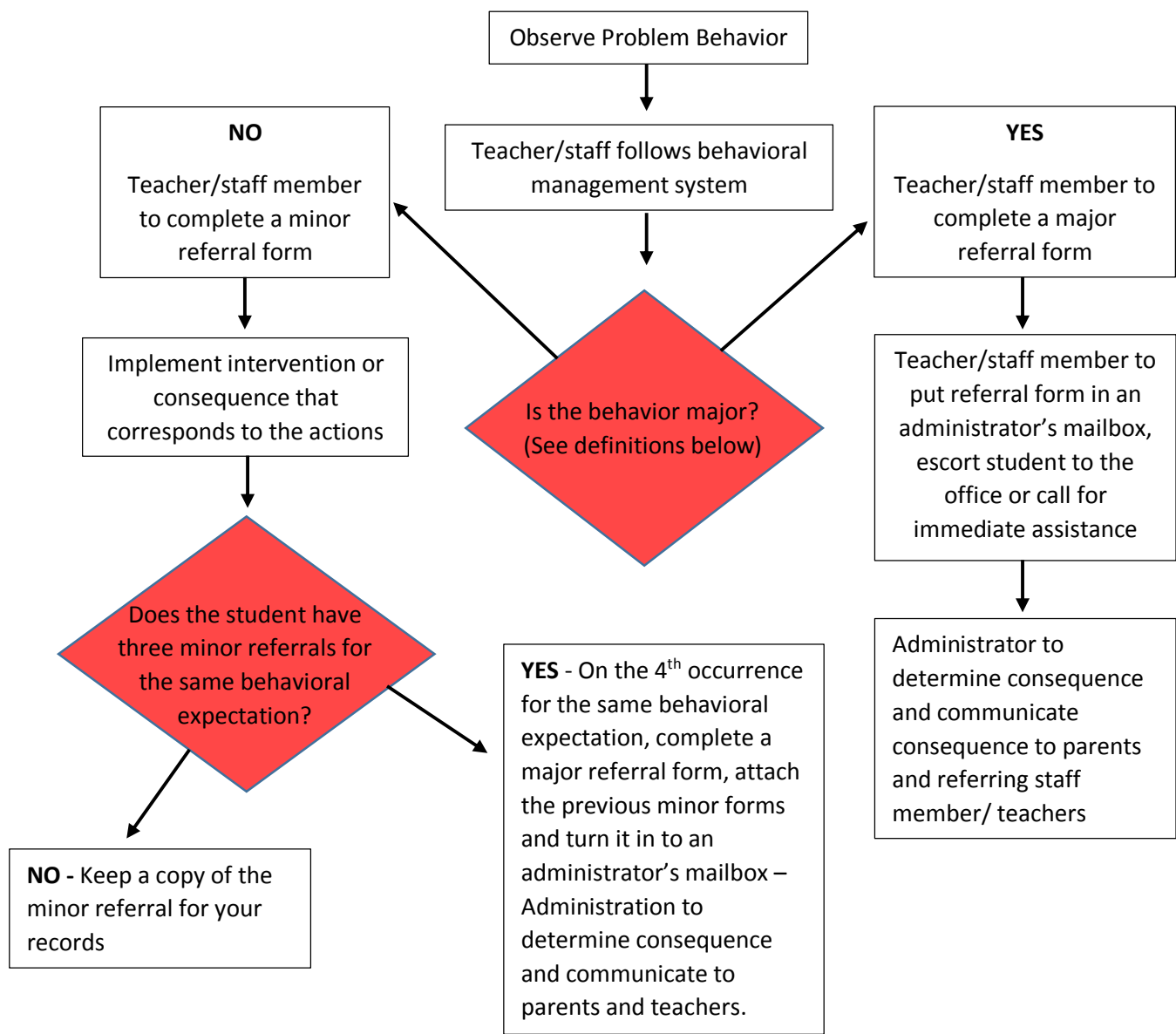


# Glen Oaks/Oak Ridge PBIS Flowchart

This serves as a guide for the most common inappropriate student behaviors and consequences; teacher/administration discretion exercised as appropriate.



| Sample Teacher Provided Consequences/Responses          |
|---|
| Parent contact/conference                               |
| Removal of privileges                                   |
| Reinforce others for appropriate behavior               |
| Discussion of expectation and positive behavior choices |
| Re-teaching   |
| Have student write an apology                           |

| Sample Administration Provided Consequences/Responses |
|---|
| Parent contact/conference                             |
| Behavior plan   |
| Social work   |
| Search of student upon entry to the building          |
| Check in/check out                                    |
| Removal of privileges                                 |
| Removal from environment*                             |
| Possible alternative placement                        |
| Contact of appropriate authorities                    |

\* Removal from environment may include the following: Removal from location (cafeteria, bus, playground, etc.), classroom/school transfer, in-school suspension, or out-of-school suspension/expulsion (in accordance with Board policy)

# Glen Oaks/Oak Ridge PBIS Matrix

*This serves as a guide for the most common inappropriate student behaviors and consequences; teacher/administration discretion exercised as appropriate.*

| <b>Teacher/Staff Managed – Minor Incident</b> |  |   |   |  |   |   |
|---|--|---|---|--|---|---|
| <b>PBIS</b>                                   | <b>Behavior</b>                        | <b>Definition</b>   | <b>1<sup>st</sup> Incident</b>  | <b>2<sup>nd</sup> Incident</b>   | <b>3<sup>rd</sup> Incident</b>  | <b>4<sup>th</sup> Incident</b>  |
| <b>Be Respectful</b>                          | Disruption                             | Low intensity , but inappropriate disruption, noise with materials  | Teacher/staff follows classroom behavioral management system  | Teacher/staff follows classroom behavioral management system               | Teacher/staff follows classroom behavioral management system                      | Administrative conference/consequence; parent contact   |
|   | Property Misuse                        | Low intensity misuse of property  | Teacher/staff follows classroom behavioral management system  | Teacher/staff follows classroom behavioral management system               | Teacher/staff follows classroom behavioral management system                      | Administrative conference/consequence; parent contact   |
|   | Misuse of personal electronic device   | iPods, cameras, cell phones, tablets, etc.  | Confiscated; turned into office; parent must pick-up item   |  |   |   |
|   | Noncompliance, Defiance, Disrespect    | Brief or low intensity failure to respond to adult requests, refusal to follow directions, talking back and/or socially rude interactions | Teacher/staff follows classroom behavioral management system  | Teacher/staff follows classroom behavioral management system               | Teacher/staff follows classroom behavioral management system                      | Administrative conference/consequence; parent contact   |
|   | Inappropriate language                 | Responding in a disrespectful tone or using language not appropriate for school   | Teacher/staff follows classroom behavioral management system  | Teacher/staff follows classroom behavioral management system               | Teacher/staff follows classroom behavioral management system                      | Administrative conference/consequence; parent contact   |
| <b>Be Safe</b>                                | Physical Contact                       | Non-serious, but inappropriate physical contact, scuffling/horseplay  | Teacher/staff follows classroom behavioral management system  | Teacher/staff follows classroom behavioral management system               | Teacher/staff follows classroom behavioral management system                      | Administrative conference/consequence; parent contact   |
|   | Not in Assigned Location               | Not at assigned area of the room or station for PD, use of facilities in another area of the building without permission                  | Teacher/staff follows classroom behavioral management system  | Teacher/staff follows classroom behavioral management system               | Teacher/staff follows classroom behavioral management system                      | Administrative conference/consequence; parent contact   |
| <b>Be Here, Be Ready</b>                      | Tardies/ Absences                      | Late to school, class   | Range includes but not limited to: parent contact, parent meeting, home visits, certified letters, health check, social work, parent and student education support program, and/or referral to appropriate authorities. |  |   |   |
|   | Missing materials, missing assignments | Frequently unprepared   | Teacher/staff follows classroom behavioral management system  | Teacher/staff follows classroom behavioral management system               | Teacher/staff follows classroom behavioral management system                      | Administrative conference/consequence; parent contact   |
|   | Academic misconduct                    | Cheating, forgery   | Teacher contacts parent; student must redo/complete alternative assignment  | Teacher contacts parent; student must redo/complete alternative assignment | Parent conference with teacher; student must redo/complete alternative assignment | Administrative conference/consequence; parent contact; student must redo/complete alternate assignment. |

# Glen Oaks/Oak Ridge PBIS Matrix

*This serves as a guide for the most common inappropriate student behaviors and consequences; teacher/administration discretion exercised as appropriate.*

| <b>Administration Managed – Major Incidents</b> |   |  |
|---|---|--|
| <b>Behavior</b>                                 | <b>Description</b>  | <b>Consequences may include, but are not limited to, the following</b>   |
| Property damage                                 | Student deliberately impairs the usefulness of property (i.e. flushing a Chromebook in the toilet)  | Parent contact/conference, parent/student responsible for assessed damages, behavior plan, social work, search of student upon entry to building, check in/check out, removal of privileges, removal from environment*, possible alternative placement, contact of appropriate authorities |
| Open defiance, major insubordination            | Flagrant or hostile challenge of the authority of a school staff member, bus driver, or any other adult in authority  | Parent contact/conference, behavior plan, social work, search of student upon entry to the building, check in/check out, removal of privileges, removal from environment*, possible alternative placement  |
| Fighting/Physical Aggression                    | Actions involving serious physical contact where injury occurs  | Parent contact/conference, behavior plan, social work, check in/check out, removal of privileges, removal from environment*, possible alternative placement  |
| Abusive/ threatening language or behaviors      | Profane/disrespectful language and/or behavior that includes swearing, name calling, bullying, racial slurs, sexual slurs, threats, harassment, or intimidation. Threats to the safety of self or others. | Parent contact/conference, behavior plan, social work, search of student upon entry to the building, check in/check out, removal of privileges, removal from environment*, possible alternative placement, contact of appropriate authorities  |
| Weapons and illegal substances                  | Possession/use of weapons, drugs, alcohol, and/or tobacco   | Parent contact/conference, behavior plan, social work, search of student upon entry to the building, check in/check out, removal of privileges, removal from environment*, possible alternative placement, contact of appropriate authorities  |
| Gang activity                                   | Unauthorized organization of gangs/ gang related activity   | Parent contact/conference, behavior plan, social work, removal of privileges, removal from environment*, possible alternative placement, contact of appropriate authorities  |

*\* Removal from environment may include the following: Removal from location (cafeteria, bus, playground, etc.), classroom/school transfer, in-school suspension, or out-of-school suspension/expulsion (in accordance with Board policy)*